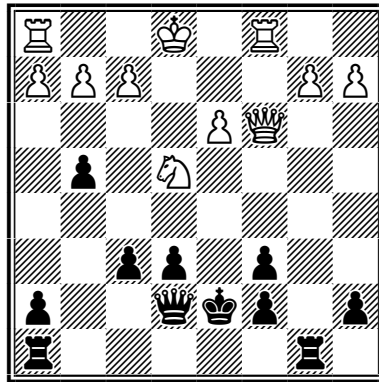
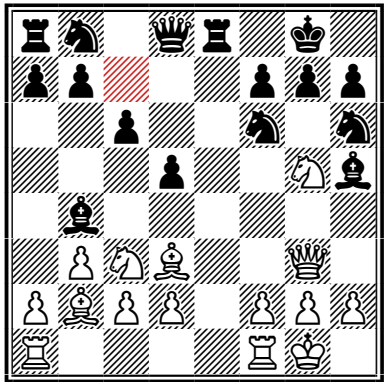
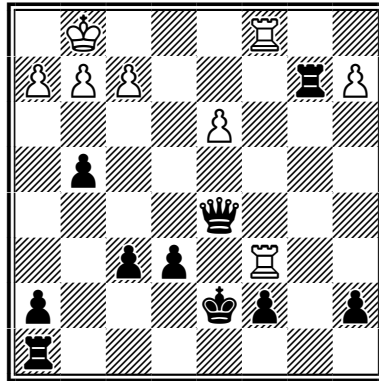
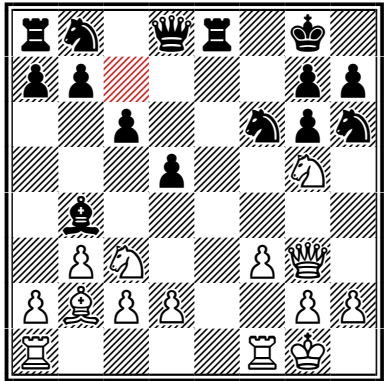


Here P@g5 was worthy of waiting for.



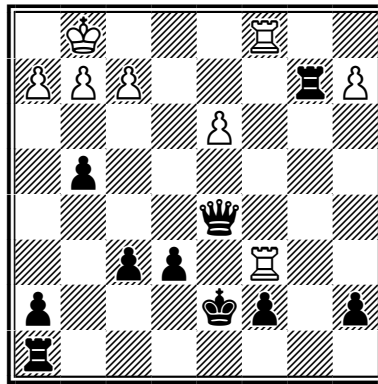
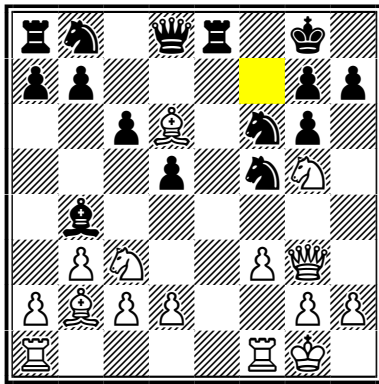
Here P@c7 with next c7xb8=Q



Here P@c7 again

♞ 3 ♙ 3 ♚

♙



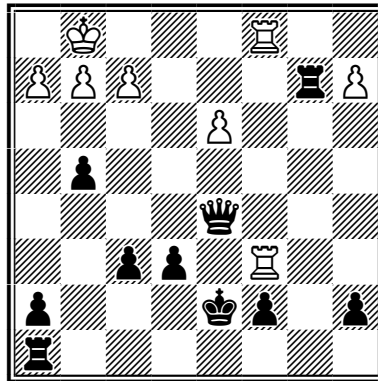
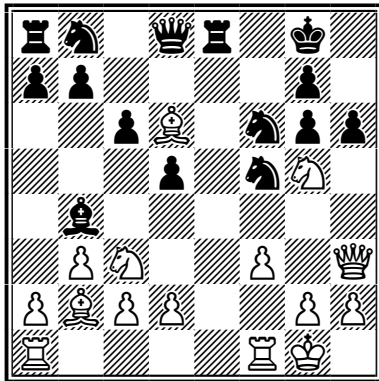
♙

2 ♞ 3 ♙ 4 ♙

Here P@f7

♞ 3 ♙ 3 ♚

♙



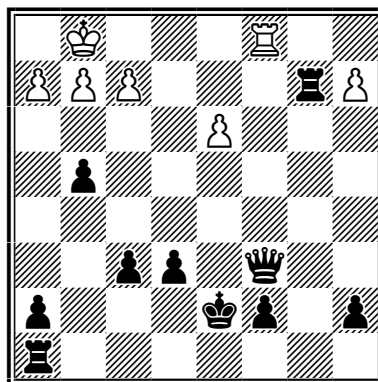
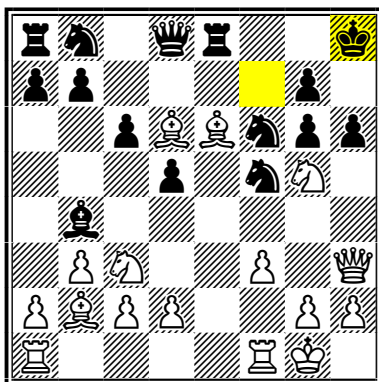
♙

2 ♞ 3 ♙ 4 ♙

Here P@f7, but B@e6 was not as bad.

♞ 3 ♙ 3 ♚

♙



♙

♞

2 ♞

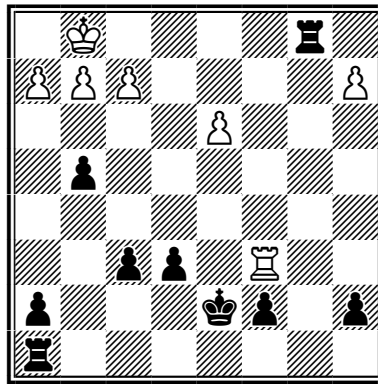
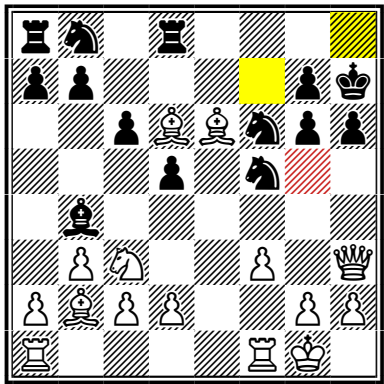
4 ♙

Here missed M2 N@f7, R@h8#

But thx from partner for Q You did give him and Your attack continued anyway :)

♔ ♞ 3 ♚ 3 ♟

♞ ♙



♔ ♖ 2 ♞ 4 ♟ ♔

Here N@g5, black cannot hxg5 because black Ph6 is pinned (king h7 from Qh3), so again checkmate after Kh8, N@f7, R@h8